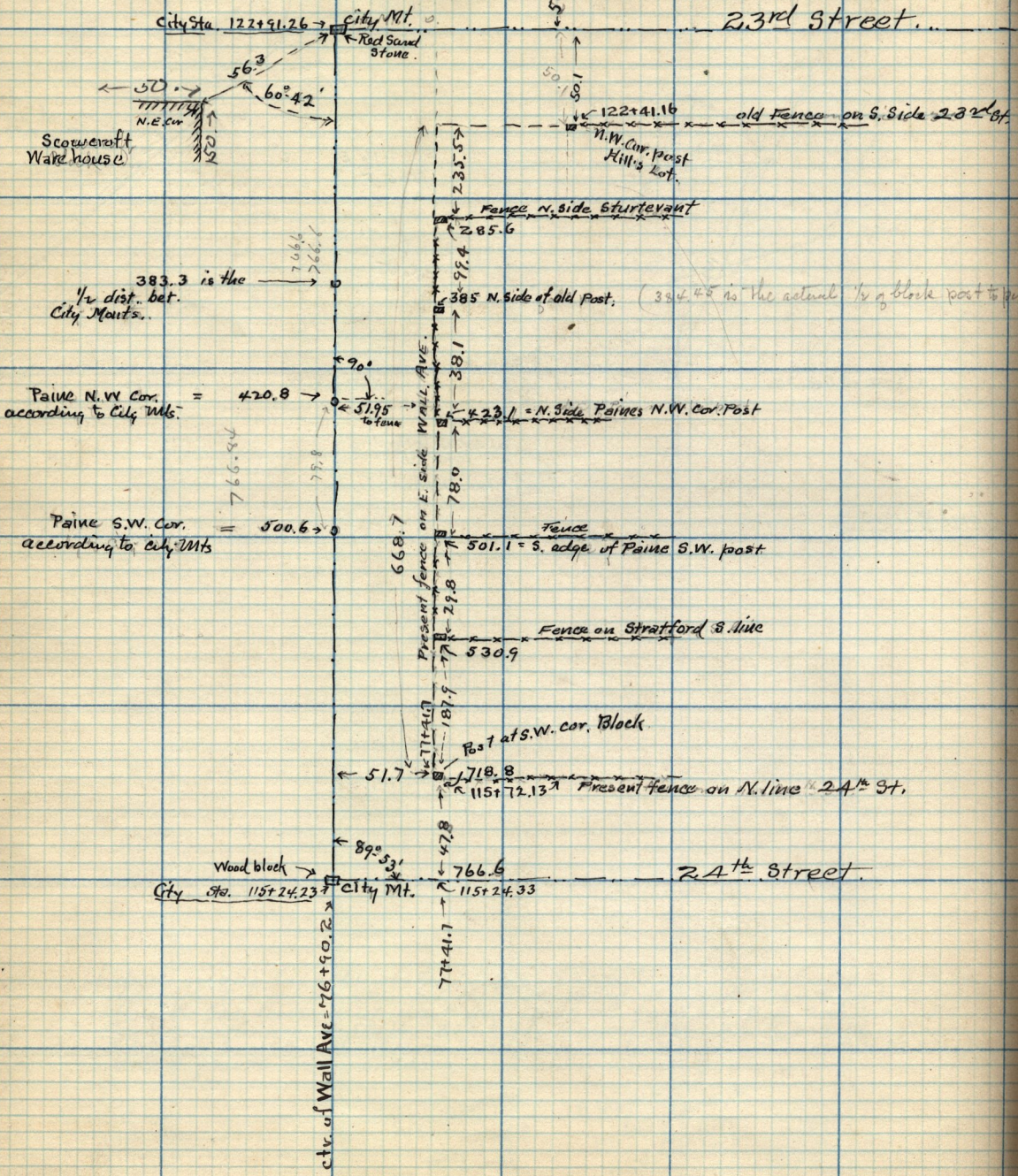


April 9-03
 Survey of pt. Lot 5-
 B. 346 for John Paine
 Plat A.
 Geo. Branscom assisted



City Sta. 122+91.26
 City Mt.
 Rock Sand Stone
 Scowcroft Warehouse
 N.E. cor
 50.0
 56.3
 60°42'

23rd Street

383.3 is the
 1/2 dist. bet.
 City Mounts.

Paine N.W. Cor.
 according to City Mts. = 420.8

Paine S.W. Cor.
 according to City Mts. = 500.6

122+41.16
 N.W. Cor. Post Hill's Lot.
 Fence N. side Sturtevant
 235.57
 285.6
 99.4

(394.40 is the actual 1/2 of block post to post)

385 N. side of old Post
 38.1
 78.0
 51.95 to fence
 123.1 = N. Side Paines N.W. Cor. Post

668.7
 Present fence on E. side WALL AVE.
 501.1 = S. edge of Paine S.W. post

530.9
 Fence on Stratford S. line

Post at S.W. cor. Block

51.7
 718.8
 115+72.13
 Present fence on N. line of 24th St.

Wood block
 City Sta. 115+24.23
 City Mt.
 89°53'
 766.6
 115+24.33
 24th Street

ctr. of Wall Ave = 76+90.2

74+41.7